

Rio-Ranch

COMMERCIAL LOTS

3351 CR 258, Liberty Hill, TX 78642

EXCLUSIVELY LISTED BY

MALLIK GILAKATTULA

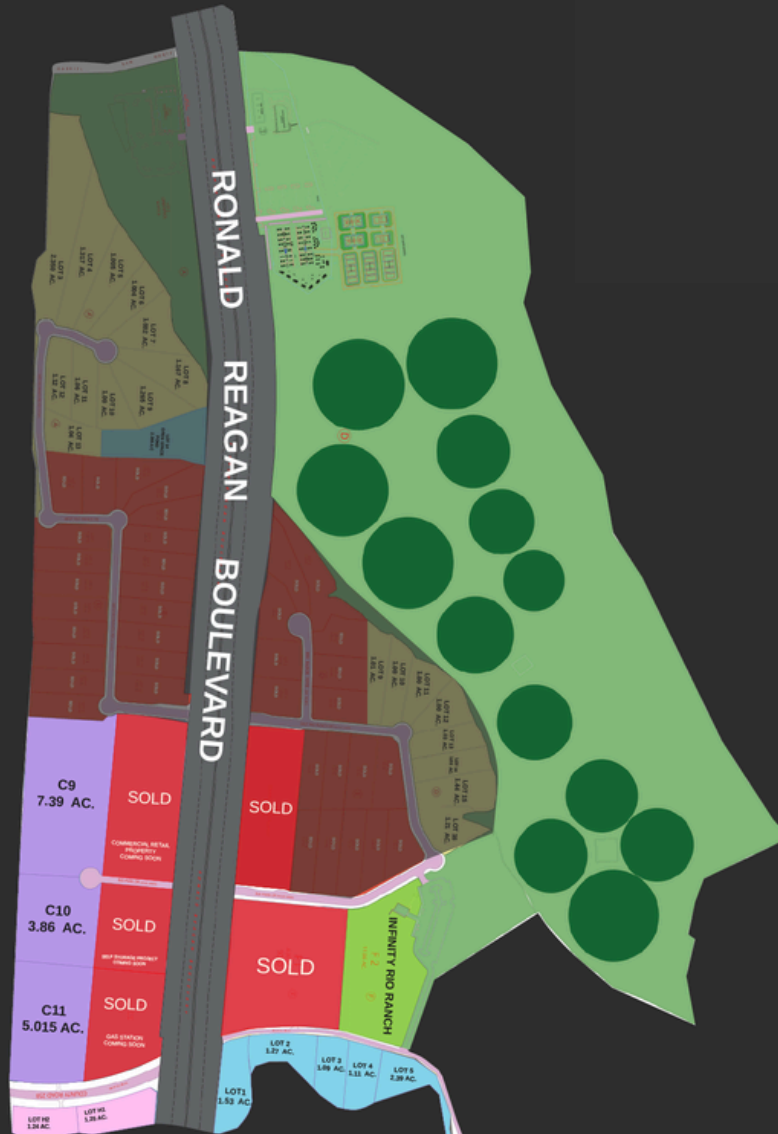
512-761-8025





High Visibility | Rapid Growth Area


RIO RANCH PLAN


RIO RANCH – INVEST WHERE TEXAS IS GROWING FASTEST
High-demand commercial lots in booming Williamson County




 **High Footfall Location** - Adjacent to Ronald Reagan Blvd with H-E-B, Walmart, and retail anchors drawing daily shoppers.

 **Lifestyle Magnet** - Creek frontage with walking trails creates a steady flow of community activity.

 **Built-In Audience** - Cricket fields attract large gatherings every weekend, boosting visibility.

 **Booming Growth Corridor:**
Liberty Hill & Leander are exploding with new housing, schools, retail, and commercial projects - driving demand and long-term value

 **Versatile Use** - Ideal for retail, restaurants, fitness, boutique offices, or healthcare centers.

SITE PLAN

AVAILABLE UNITS

SATELLITE IMAGES

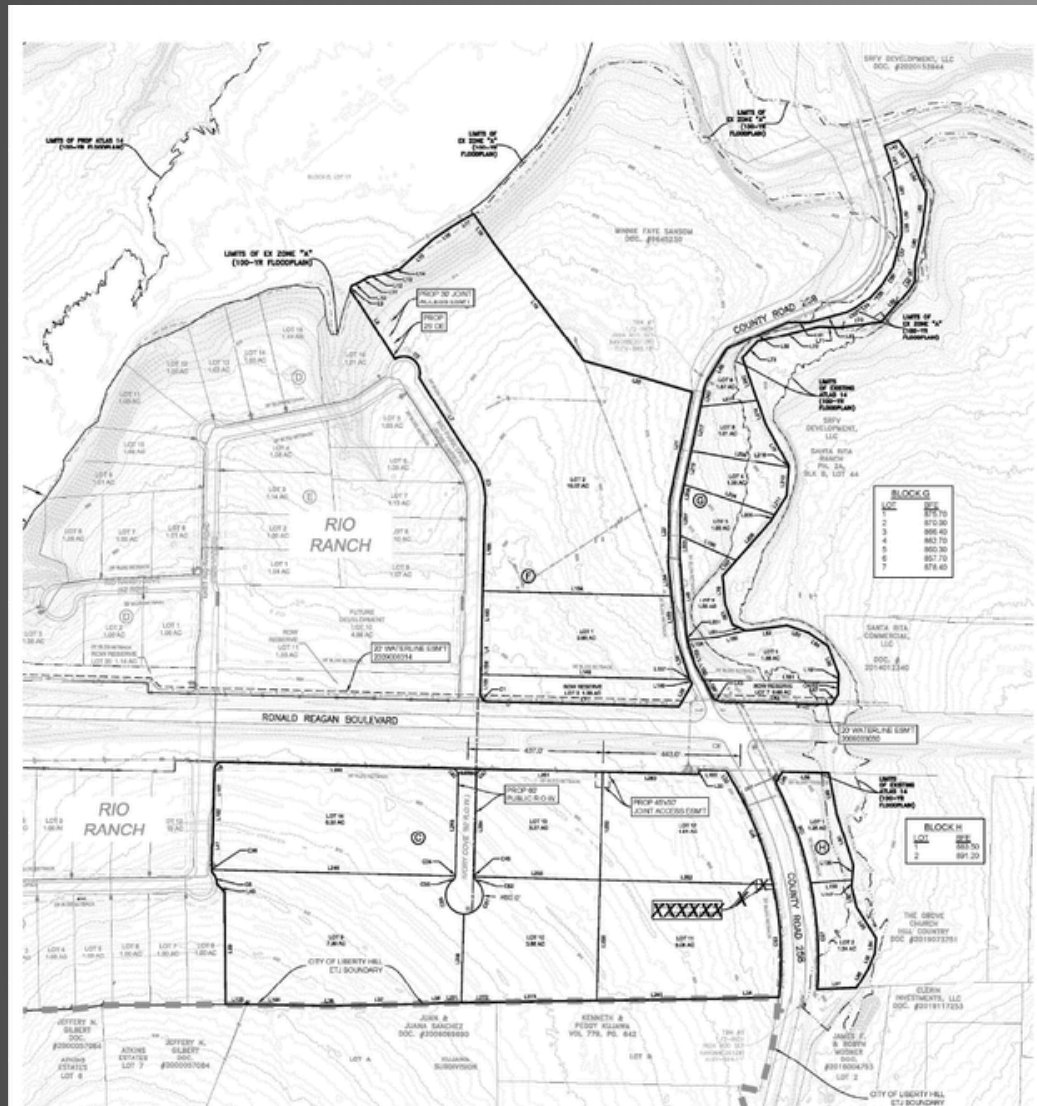
RIO RANCH – INVEST WHERE TEXAS IS GROWING FASTEST
High-demand commercial lots in booming Williamson County



SATELLITE IMAGES

TOPO PLANS

Each lot comes with paved roads, water lines, and power at the tract frontage. Septic installation required.



TOPO PLAN

RIO RANCH COMMERCIAL LOTS

Claim Your Lots Before They're Gone

Opportunities like this don't last in Williamson County's growth zone.

Exclusively Listed

MALLIK GILAKATTULA

512-761-8025

RAJU PADIGALA

937-286-7929